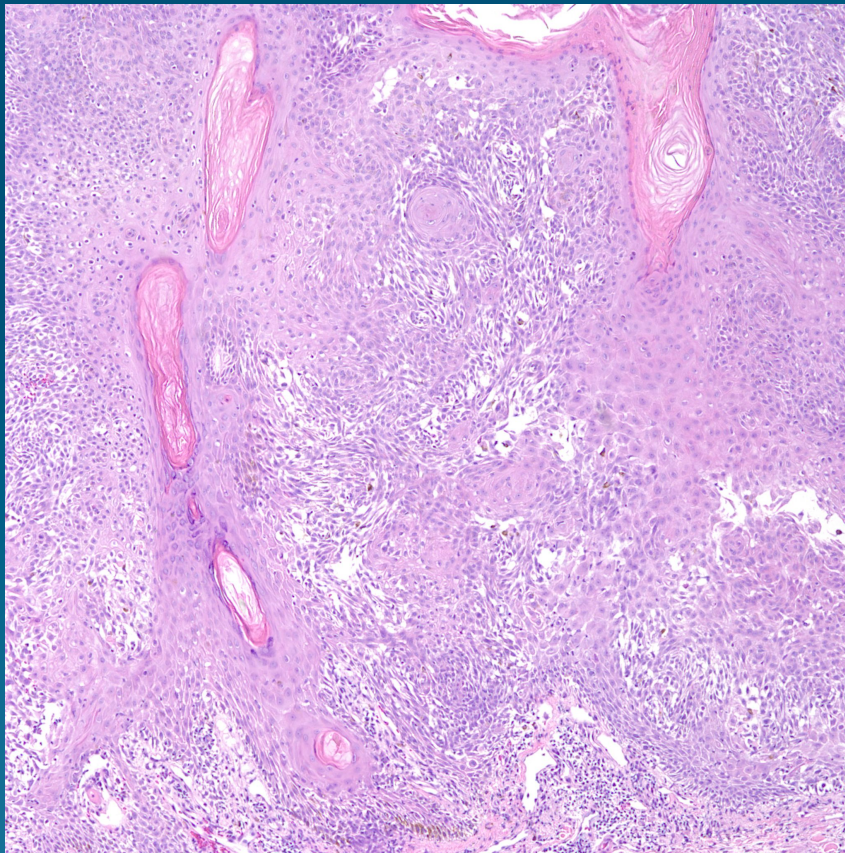


What is the best diagnosis?

- A. Eccrine poroma
- B. Nodular basal cell carcinoma
- C. Malignant melanoma in situ
- D. Inflamed seborrheic keratosis
- E. Inverted follicular keratosis

Inflamed and Irritated Seborrheic Keratosis

Pearls



- Silhouette of flat epidermal proliferation with horn pseudocysts
- Squamous eddies with scattered spongiotic foci
- Minimal cytologic atypia